

Alternative Hosts to *Phakopsora pachyrhizi*, the Causal Agent of Soybean Rust

T.N. Lynch¹, M.R. Miles², R.D. Frederick³, M.R. Bonde³, G.L. Hartman^{1,2}

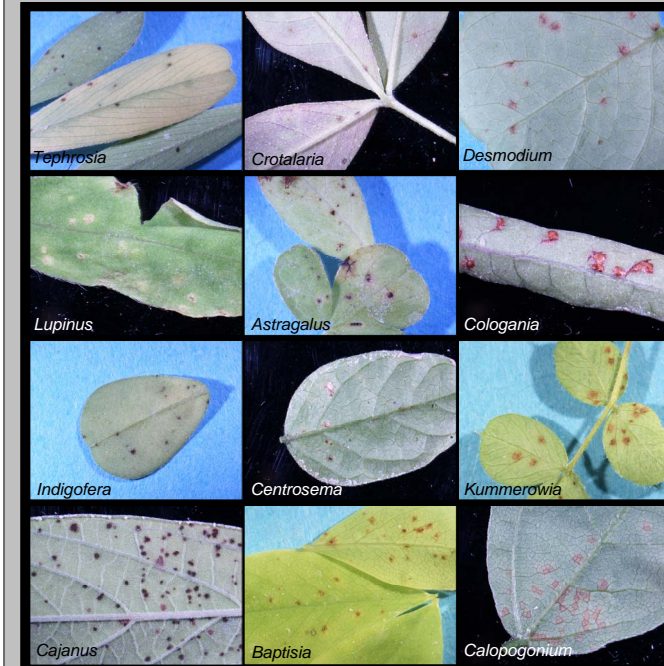
¹Dept. of Crop Sciences, University of Illinois at Urbana-Champaign, Urbana, IL 61801 ²USDA-ARS, National Soybean Research Center, Urbana, IL 61801 ³USDA-ARS, Foreign Disease-Weed Science Research Unit (FDWSRU), Ft. Detrick, MD 21702

Introduction

Phakopsora pachyrhizi Syd. & P. Syd. is known to have a broad host range. Nearly all of the known hosts belong to the subfamily Papilionoideae within the family Fabaceae. Little is known about whether the legumes in the U.S. could be hosts of *P. pachyrhizi* since they previously have not been associated with the geographically isolated fungus. These alternative hosts could serve as additional inoculum sources and provide additional overwintering sites for the pathogen.



Figure 1. Lesions of *P. pachyrhizi* on various hosts at 1X magnification.



Materials and Methods

In this study, 176 species representing 57 genera of legumes, the majority of which were either native or naturalized to soybean growing areas of the U.S., were tested at the USDA-ARS FDWSRU Plant Pathogen Containment Facility. A total of 264 accessions (between one and three accessions per species) were inoculated with a mixture of four *P. pachyrhizi* isolates collected in 2001 from Brazil, Paraguay, Thailand and Zimbabwe. Plants were rated 14 days later, reinoculated, and rated again 14 days after reinoculation. Reaction type and severity and sporulation data were taken on both dates using a 1-5 scale (1 = no visible symptoms; 5 = fully susceptible).

Results

Of the 176 species inoculated, 105 species in 33 genera were infected. Of the 105 infected, 87 species in 28 genera were previously unreported as hosts. Of these, 14 new genera are reported. Forty-eight new host species had visible sporulation with a range from 1.1 to 5 and mean severities ranging from 1.3 to 4; only four had a tan reaction (Table 1). The rust reaction on sporulating host species was variable (Figure 1).

Acknowledgements

Thanks to JoAnn Garrett and Tung Anh Pham for all their help. Thanks also to the Illinois Soybean Association and the North Central Soybean Research Program for their financial support.

Table 1. New hosts to *P. pachyrhizi* with visible sporulation.

Scientific Name	# Acc ¹	N ²	Mean severity	SD ³	Mean sporulation	SD ³
<i>Astragalus cicer</i>	3	8	3.1	0.6	1.5	1.1
<i>Astragalus glycyphyllos</i>	3	5	1.6	0.5	1.2	0.4
<i>Baptisia alba</i> var. <i>macrophylla</i>	2	5	2.0	1.0	1.2	0.4
<i>Baptisia bracteata</i> var. <i>laevicaulis</i>	1	3	2.3	1.2	1.3	0.6
<i>Calopogonium caeruleum</i> ⁴	1	3	4.0	1.0	2.0	1.0
<i>Caragana arborescens</i>	5	13	1.7	0.6	2.1	1.7
<i>Centrosema virginianum</i>	3	4	1.8	1.5	1.8	1.5
<i>Cologania angustifolia</i> var. <i>angustifolia</i>	2	6	4.0	0.9	3.5	1.2
<i>Cologania angustifolia</i> var. <i>stricta</i>	2	6	2.7	0.5	2.2	0.8
<i>Cologania lemmonii</i>	1	1	4.0	.	4.0	.
<i>Crotalaria incana</i> ⁴	3	7	2.0	0.8	2.6	2.0
<i>Crotalaria lanceolata</i> ⁴	3	3	1.7	1.2	2.3	2.3
<i>Crotalaria ochroleuca</i>	3	7	1.7	0.8	1.1	0.4
<i>Crotalaria sagittalis</i>	1	3	1.7	0.6	1.3	0.6
<i>Crotalaria verrucosa</i>	1	3	2.3	0.6	1.7	1.2
<i>Desmodium cuspidatum</i>	1	2	2.0	0.0	3.0	2.8
<i>Desmodium obtusum</i>	1	3	2.7	1.2	1.7	0.6
<i>Desmodium perplexum</i>	1	3	2.3	0.6	2.7	2.1
<i>Glycine max</i> ⁴	2	6	3.7	1.0	3.7	1.4
<i>Glycyrrhiza lepidota</i>	3	9	2.8	0.7	1.2	0.4
<i>Indigofera spicata</i>	3	5	1.8	0.8	1.2	0.4
<i>Indigofera suffruticosa</i>	2	5	2.0	1.0	1.2	0.4
<i>Kummerowia stipulacea</i>	3	9	3.0	1.0	1.3	0.7
<i>Lathyrus aphaca</i>	3	7	2.3	1.3	2.7	1.7
<i>Lespedeza capitata</i>	3	9	3.1	0.9	1.1	0.3
<i>Lespedeza cuneata</i>	3	9	2.3	0.5	1.3	0.5
<i>Lespedeza cyrtobotrya</i>	3	8	2.3	0.7	1.4	0.5
<i>Lespedeza thumbergii</i>	2	5	1.6	0.5	1.4	0.9
<i>Lotus pedunculatus</i>	1	3	1.7	1.2	1.3	0.6
<i>Lupinus perennis</i>	1	1	2.0	.	5.0	.
<i>Lupinus texensis</i>	1	2	3.0	1.4	1.5	0.7
<i>Medicago laciniata</i>	3	9	1.3	0.7	1.1	0.3
<i>Medicago lupulina</i>	3	8	1.4	0.5	1.5	1.4
<i>Medicago orbicularis</i>	5	15	2.4	0.8	1.5	1.1
<i>Medicago sativa</i> ssp. <i>falcata</i>	3	9	1.3	0.5	1.3	1.0
<i>Pseudovigna argentea</i> ⁴	1	2	4.0	1.4	2.5	0.7
<i>Robinia viscosa</i> var. <i>hartwegii</i>	1	3	2.3	0.6	1.3	0.6
<i>Senna sophora</i>	1	3	2.3	0.6	1.3	0.6
<i>Tephrosia cinerea</i>	1	1	3.0	.	3.0	.
<i>Tephrosia purpurea</i>	5	7	2.9	0.4	1.6	0.5
<i>Teramnus labialis</i>	5	10	2.5	1.0	1.5	1.3
<i>Teramnus micans</i>	1	2	2.0	0.0	1.5	0.7
<i>Teramnus uncinatus</i>	4	12	2.4	0.7	1.1	0.3
<i>Trifolium aureum</i>	1	3	1.3	0.6	1.3	0.6
<i>Trifolium cernuum</i>	1	3	2.7	0.6	2.0	1.7
<i>Trifolium lappaceum</i>	3	8	1.6	0.7	1.1	0.4
<i>Trifolium spumosum</i>	1	2	3.0	0.0	1.5	0.7
<i>Vigna adenantha</i>	2	5	2.0	1.0	2.6	2.2
<i>Vigna luteola</i>	3	9	3.3	0.5	2.1	1.1

¹Number of accessions; ²Number of plants; ³Standard deviation; ⁴Indicates a tan reaction type

Conclusions

The fungus did not sporulate on all hosts with *P. pachyrhizi* infection. The sporulation and severity ratings may help in predicting the general susceptibility of a host, but it is important to recognize that greenhouse conditions in the Ft. Detrick containment facility were controlled. The legumes tested are native to areas with diverse climates and microclimates ranging from the subtropical Florida Keys to the temperate Midwest. The infection potential of nonsporulating hosts in the greenhouse experiment should still be considered because of the critical role of environmental conditions in dictating the behavior of the fungus. The various habitats for these plants throughout the U.S. could result in altered infectivity, severity, and sporulation to what was observed in the greenhouse.